

# GENERAL INFORMATION

GI



# SECTION GI

## CONTENTS

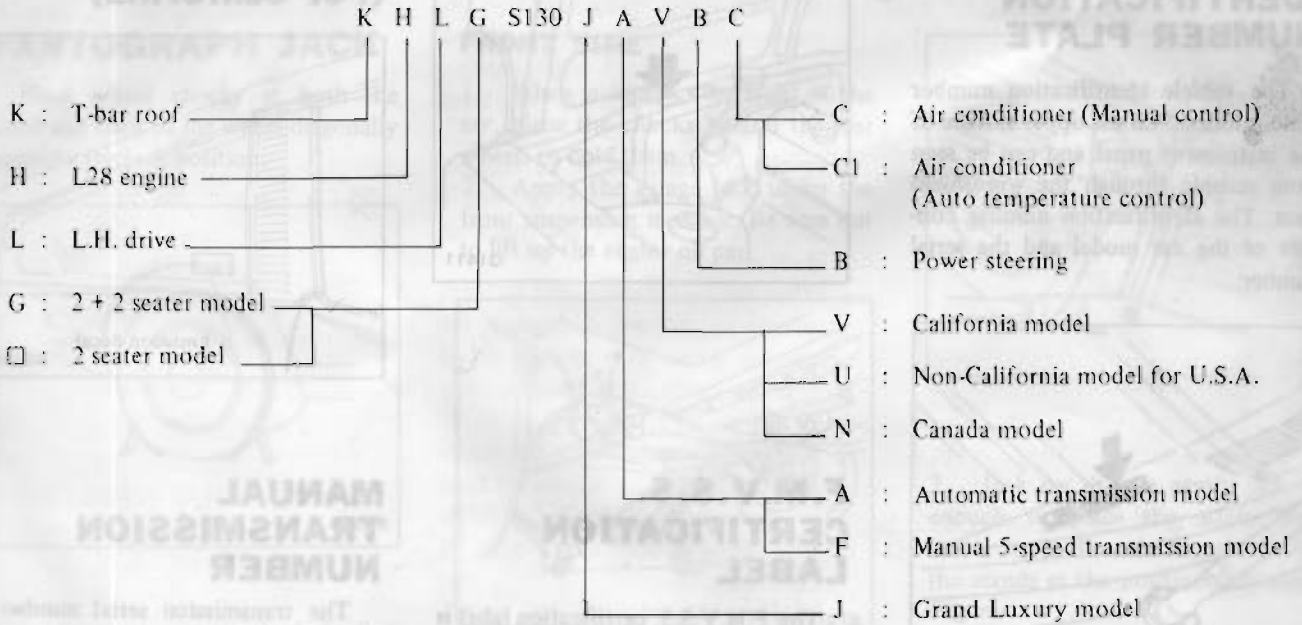
|                                      |      |  |      |
|--------------------------------------|------|--|------|
| <b>MODEL VARIATION</b> .....         | GI-2 | EMISSION DECAL (For California) .....  | GI-4 |
| <b>IDENTIFICATION NUMBERS</b> .....  | GI-3 | MANUAL TRANSMISSION NUMBER .....       | GI-4 |
| VEHICLE IDENTIFICATION PLATE .....   | GI-3 | AUTOMATIC TRANSMISSION NUMBER .....    | GI-4 |
| VEHICLE SERIAL NUMBER .....          | GI-3 | <b>LIFTING POINTS AND TOWING</b> ..... | GI-5 |
| VEHICLE IDENTIFICATION NUMBER        |      | PANTOGRAPH JACK .....                  | GI-5 |
| PLATE .....                          | GI-4 | GARAGE JACK AND SAFETY STAND .....     | GI-5 |
| ENGINE SERIAL NUMBER .....           | GI-4 | TOWING .....                           | GI-6 |
| COLOR CODE NUMBER LABEL .....        | GI-4 | TIE-DOWN .....                         | GI-6 |
| F.M.V.S.S. CERTIFICATION LABEL ..... | GI-4 | <b>SPECIAL TOOLS</b> .....             | GI-6 |
| EMISSION CONTROL INFORMATION         |      |  |      |
| LABEL .....                          | GI-4 |  |      |

## MODEL VARIATION

| Destination  | Model          |              | Engine      | Transmission | Differential carrier | Road wheel size ...<br>Off set mm (in)   | Tire size                |         |      |
|--------------|----------------|--------------|-------------|--------------|----------------------|--|--------------------------|---------|------|
| U.S.A.       | California     | 2 seater     | L28E        | FS5W71B      | R180                 | 5-1/2JJ-14<br>... 15 (0.59)<br>6JJ-14 *1<br>... 10 (0.39)<br>5J-14 *2<br>... 15 (0.59) | 195/70HR-14<br>C78-14 *3 |         |      |
|              |                |              |             |              | R200                 |  |                          |         |      |
|              |                |              |             | T-bar roof   | HLS130FV             |  |                          | 3N71B   | R180 |
|              |                |              |             |              | HLS130JFV            |  |                          |         |      |
|              |                | 2 + 2 seater |             | T-bar roof   | HLS130AV             |  |                          | FS5W71B | R200 |
|              |                |              |             |              | HLS130JAV            |  |                          |         |      |
|              |                |              |             | T-bar roof   | KHLS130FV            |  |                          | 3N71B   | R180 |
|              |                |              |             |              | KHLS130JFV           |  |                          |         |      |
|              |                | T-bar roof   |             | KHLS130AV    | FS5W71B              |  |                          | R200    |      |
|              |                |              |             | KHLS130JAV   |                      |  |                          |         |      |
|              | Non-California | 2 seater     |             | T-bar roof   | HLGS130JFV           |  |                          | 3N71B   | R180 |
|              |                |              |             |              | HLGS130JAV           |  |                          |         |      |
|              |                |              |             | T-bar roof   | KHLGS130JFV          |  |                          | FS5W71B | R200 |
|              |                |              |             |              | KHLGS130JAV          |  |                          |         |      |
|              |                | 2 + 2 seater |             | T-bar roof   | HLS130FU             |  |                          | 3N71B   | R180 |
|              |                |              |             |              | HLS130JFU            |  |                          |         |      |
|              |                |              |             | T-bar roof   | HLS130AU             |  |                          | FS5W71B | R200 |
|              |                |              |             |              | HLS130JAU            |  |                          |         |      |
|              |                | T-bar roof   |             | KHLS130FU    | 3N71B                |  |                          | R180    |      |
|              |                |              |             | KHLS130JFU   |                      |  |                          |         |      |
| T-bar roof   | KHLS130AU      | FS5W71B      | R200        |              |                      |  |                          |         |      |
|              | KHLS130JAU     |              |             |              |                      |  |                          |         |      |
| Canada       | 2 seater       | T-bar roof   | HLGS130JFV  | 3N71B        | R180                 |  |                          |         |      |
|              |                |              | HLGS130JAV  |              |                      |  |                          |         |      |
|              |                | T-bar roof   | KHLGS130JFV | FS5W71B      | R200                 |  |                          |         |      |
|              |                |              | KHLGS130JAV |              |                      |  |                          |         |      |
|              | 2 + 2 seater   | T-bar roof   | HLS130FN    | 3N71B        | R180                 |  |                          |         |      |
|              |                |              | HLS130JFN   |              |                      |  |                          |         |      |
|              |                | T-bar roof   | HLS130AN    | FS5W71B      | R200                 |  |                          |         |      |
|              |                |              | HLS130JAN   |              |                      |  |                          |         |      |
|              | T-bar roof     | KHLS130FN    | 3N71B       | R180         |                      |  |                          |         |      |
|              |                | KHLS130JFN   |             |              |                      |  |                          |         |      |
| T-bar roof   | KHLS130AN      | FS5W71B      | R200        |              |                      |  |                          |         |      |
|              | KHLS130JAN     |              |             |              |                      |  |                          |         |      |
| 2 + 2 seater | T-bar roof     | HLGS130JFN   | 3N71B       | R180         |                      |  |                          |         |      |
|              |                | HLGS130JAN   |             |              |                      |  |                          |         |      |
|              | T-bar roof     | KHLGS130JFN  | FS5W71B     | R200         |                      |  |                          |         |      |
|              |                | KLGS130JAN   |             |              |                      |  |                          |         |      |

- \*1: Aluminum wheel (1 piece or 2 pieces)
- \*2: For Space Saver Spare tire and Foldable Spare tire
- \*3: Space Saver Spare tire and Foldable Spare tire

Prefix and suffix designations



□ : means no indication

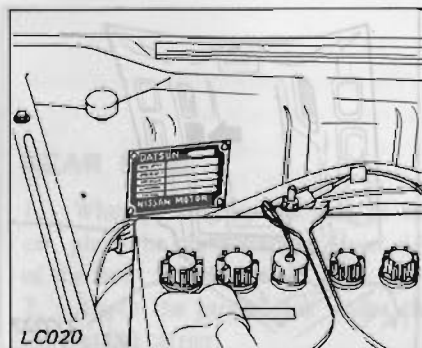
## IDENTIFICATION NUMBERS

The unit and car numbers are stamped and registered at the factory.

The engine and vehicle identification numbers are used on legal documents. These numbers are used for factory communications such as Technical Reports, Warranty Claims, Technical Bulletins and other information.

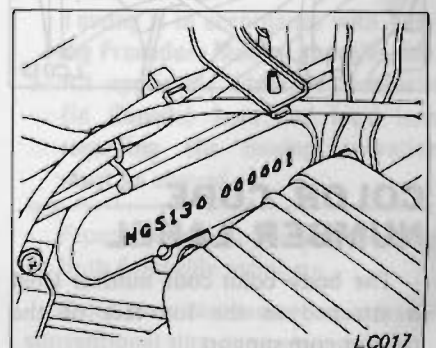
### VEHICLE IDENTIFICATION PLATE

The vehicle identification plate is located on the cowl top in the engine compartment. The plate contains the car type, engine capacity, maximum horsepower, wheelbase and engine and car serial numbers.



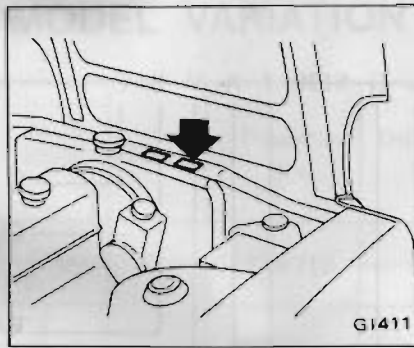
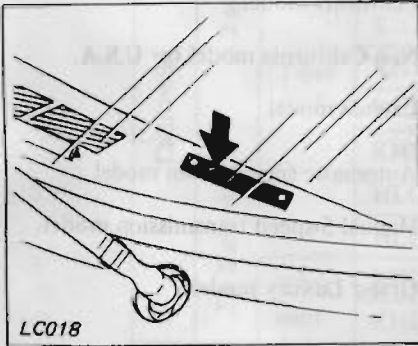
### VEHICLE SERIAL NUMBER

The vehicle serial number is stamped on the dash panel in the engine compartment and is broken down as shown in the following figure.

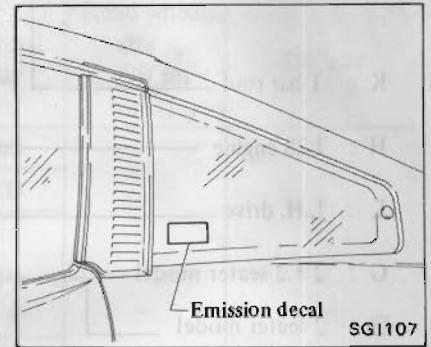


## VEHICLE IDENTIFICATION NUMBER PLATE

The vehicle identification number plate is located on the upper surface of the instrument panel and can be seen from outside through the windshield glass. The identification number consists of the car model and the serial number.

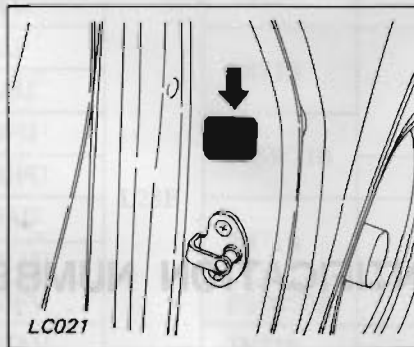


## EMISSION DECAL (For California)



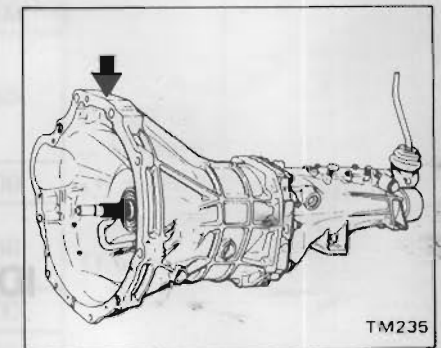
## F.M.V.S.S. CERTIFICATION LABEL

The F.M.V.S.S. certification label is attached to the driver's side lock pillar as shown.



## MANUAL TRANSMISSION NUMBER

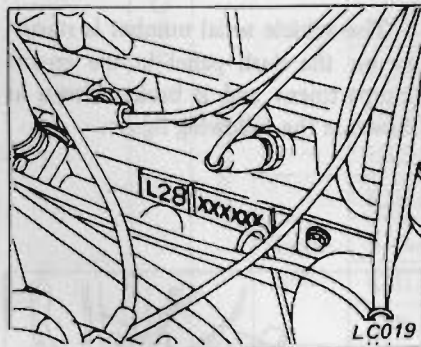
The transmission serial number is stamped on the front upper face of the transmission case.



## ENGINE SERIAL NUMBER

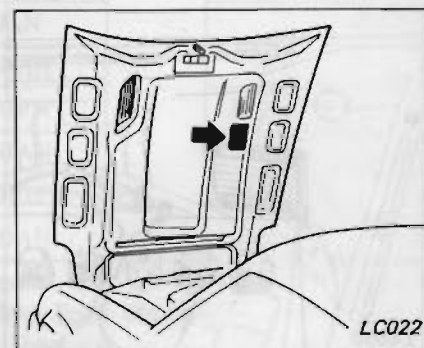
The engine serial number is stamped on the right-hand side of the cylinder block. The number is broken down as shown.

| Engine model | Engine number |
|--------------|---------------|
| L28          | L28-XXXXXX    |



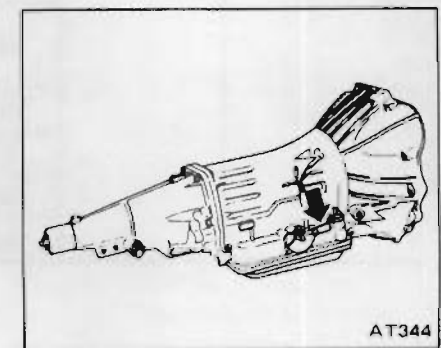
## EMISSION CONTROL INFORMATION LABEL

The emission control information label is attached to the back of the engine hood on the right side.



## AUTOMATIC TRANSMISSION NUMBER

The transmission serial number plate is attached on the right-hand side of the transmission case.



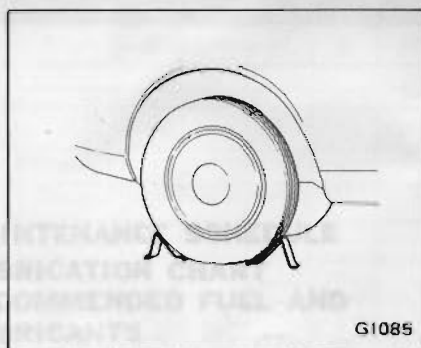
## COLOR CODE NUMBER LABEL

The body color code number label is attached to the top face of the radiator core support.

## LIFTING POINTS AND TOWING

### PANTOGRAPH JACK

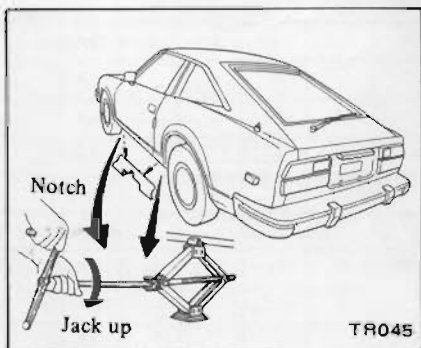
Place wheel chocks at both the front and back of the wheel diagonally opposite the jack position.



Apply the pantograph jack furnished with the car to the position indicated below in a safe manner.

**WARNING:**

- a. Never get under the car while it is supported only by the jack. Always use safety stands to support frame when you have to get under the car.
- b. Block the wheels diagonally with wheel chocks.



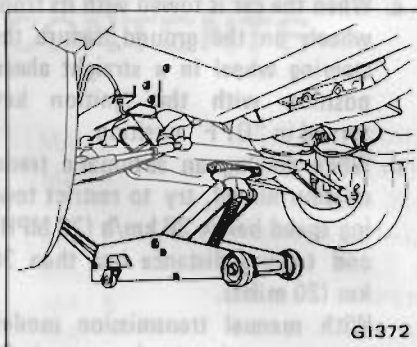
### GARAGE JACK AND SAFETY STAND

**WARNING:**

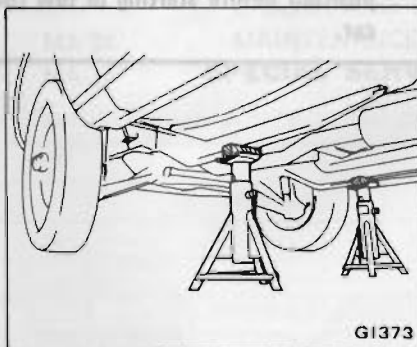
When carrying out operations with the garage jack, be sure to support the car with safety stands.

### FRONT SIDE

1. When jacking up the front of the car, place the chocks behind the rear wheels to hold them.
2. Apply the garage jack under the front suspension member. Be sure not to lift up the engine oil pan.



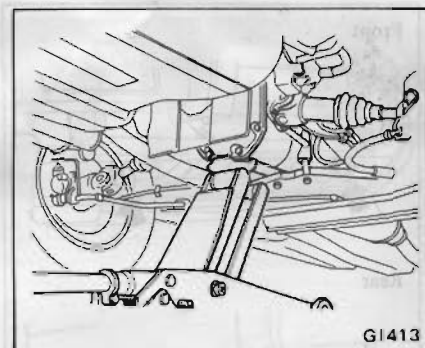
3. Jack up the car gently just high enough to place the safety stands under both the side members. Place the stands at the position indicated in Figure.



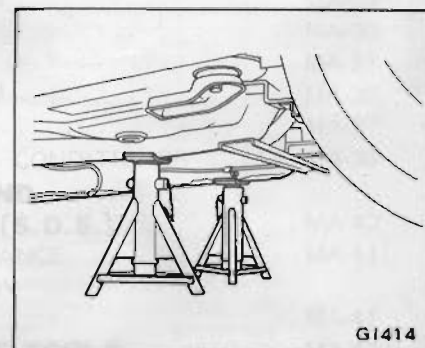
4. Release the jack slowly.

### REAR SIDE

1. When jacking up the rear of the car, place the chocks at the front side of the front wheels to hold them.
2. Apply the garage jack under the differential carrier.



3. Jack up the car gently just high enough to place the safety stands under both the side members. Place the stands at the position indicated in Figure.



### TOWING

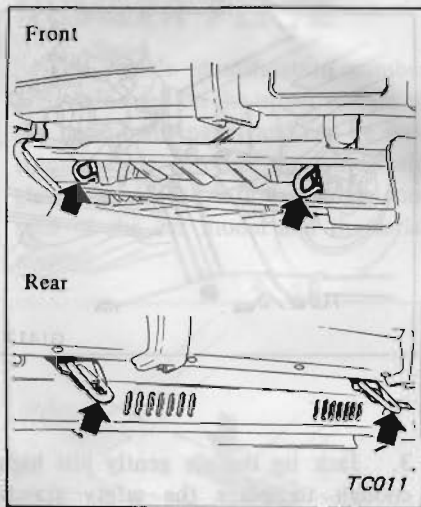
**CAUTION:**

- a. It is necessary to use proper towing equipment, to avoid possible damage to the car during a towing operation.  
Towing is in accordance with Towing Procedure Manual at dealer side.
- b. All applicable State or Provincial (in Canada) laws and local laws regarding the towing operation must be obeyed.

Front towing hooks are provided on both front side members.

**Front tow:** Not recommended with conventional sling-type equipment.

Rear towing hooks are combined with shock absorber for rear bumper.



**CAUTION:**

- a. Before towing, make sure that the transmission, axles, steering system and power train are in good order. If any unit is damaged, a dolly must be used.
- b. If the transmission is inoperative, tow the car with the rear wheels off the ground, or with the propeller shaft removed.
- c. When the car is towed with its front wheels on the ground, secure the steering wheel in a straight ahead position with the ignition key turned in "OFF" position.
- d. When towing an automatic transmission model, try to restrict towing speed below 30 km/h (20 MPH) and towing distance less than 30 km (20 miles).  
With manual transmission model, try to restrict towing speed 80 km/h (50 MPH) and towing distance less than 80 km (50 miles).  
If the speed or distance must necessarily be greater, remove the propeller shaft beforehand to prevent damage to the transmission.
- e. Release the parking brake and set the gearshift lever in "Neutral" position before starting to tow the car.

**TIE-DOWN**

Use front and rear towing hooks for tie-down at front and rear sides.

Special Tools play very important role in the maintenance of cars. These are essential to the safe, accurate and speedy servicing.

The working times listed in the column under FLAT RATE TIME in FLAT RATE SCHEDULE are computed based on the use of Special Tools.

**SPECIAL TOOLS**

The identification code of maintenance tools is made up of 2 alphabetical letters and 8-digital figures.

The heading two letters roughly classify tools or equipment as:

- ST00000000: Special Tool
- KV00000000: Special Tool
- EM00000000: Engine Overhauling Machine
- GG00000000: General Gauge
- LM00000000: Garage Tool
- HT00000000: Hand Tool